



8000 Series

Door furniture



Modern design combined with functionality are the hallmark of the Legge 8000 Series, with a refined square rose and a wide selection of designer levers to choose from.

The Legge 8000 Series will enhance the standard and elegance of any residential and commercial applications like apartments, office fitouts, hotels, and highend quality homes.

Features

- Constructed of quality components, with forged brass levers and inner roses, and pressed zinc rose caps
- Heavy duty spring provides a smooth, positive return action of the lever and eliminates drooping extending the life of the product
- Furniture re-handed by simple relocation of stop block
- Levers non-handed.
- Suitable for use on fire door assemblies when used with fire rated locks and latches



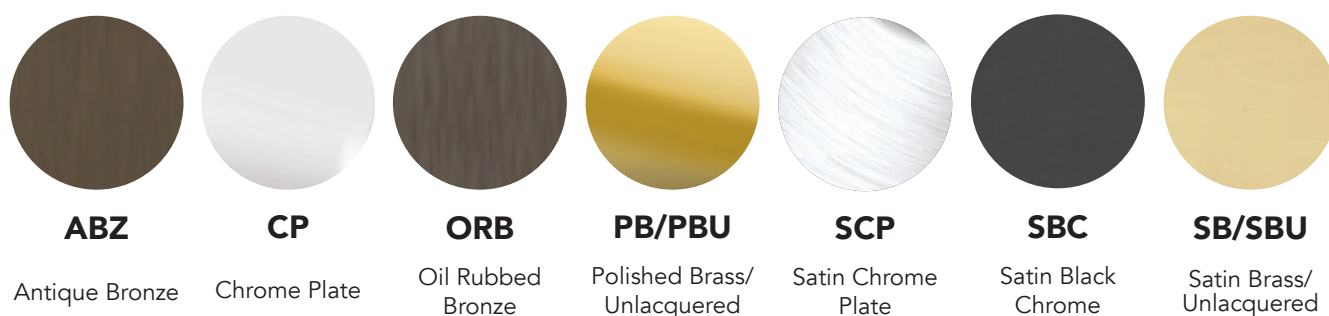
Warranties	
Mechanical	10 years
Finish	allegion.co.nz/finisheswarranty

Specification guide

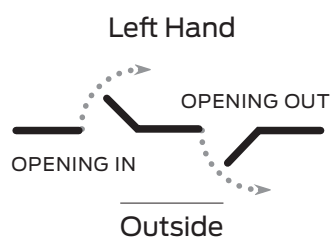
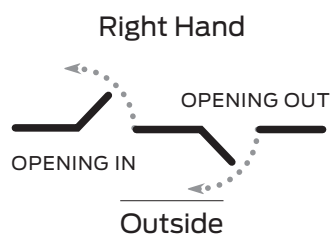
Function	Lever	Finish
Lock/latch furniture8000	refer following pages	Antique bronzeA
Half set 8001		Chrome plate C
Half set fixed 8002		Oil rubbed bronze ORB
Blank rose8003		Polished brass P
Passage latchset8005		Polished brass unlacquered PU
Privacy latchset 8006		Satin chrome plate S
		Satin black chrome SBC
		Satin brass SB
		Satin brass unlacquered SBU

- 1. Function**
Select the desired function e.g. Passage set 8005/
- 2. Lever**
Select the required lever design e.g. Alpha #29 8005/29
- 3. Finish**
Select the desired finish e.g. Satin chrome plate 8005/29S

Finishes



Handing guide



Specifications

Specifications

Door type	Timber or metal
Door thickness	Latch furniture 32mm to 50mm Passage set 32mm to 50mm Privacy set 32mm to 42mm
Backset	60mm
Spindle size	7.6mm
Compatible locks/latches	Schlage ME Series mortice locks Legge 990MF Series mortice locks Legge Tubular Latches
Fixing	Bolt-through concealed fixing. Screw length 75mm
Materials	Forged brass levers and inner roses, zinc die cast rose caps
Warranty	30 year mechanical

Testing and Compliance



Fire Rating:

Successfully tested on fire door assemblies in accordance with AS1905 Part1: Fire resistance doorsets. Check with fire door manufacturer prior to installation.



Accessibility:

Compliant to the AS 1428:1-2009 Design for Access and Mobility

Caution:

When door closers are installed and adjusted to meet reduced opening force requirements, there may be insufficient power to reliably close and latch the door, depending on prevailing operating conditions.

Note:

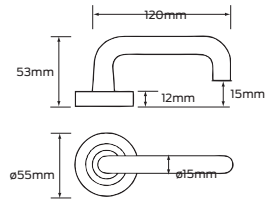
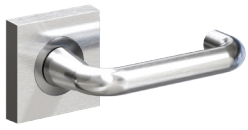
In areas of high wind pressure and/or air conditioning pressures, the LCN Automatic Door Operators are recommended.

Functions

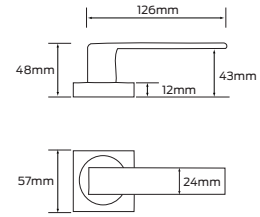
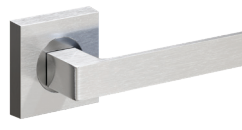
Functions	Outside	Inside
8000 - Lock/latch furniture Two levers to be used with a latch or converted to dummy trim with fixing kit		
8001 - Half set One lever to be used with a latch or converted to dummy trim with fixing kit		
8002 - Half set fixed Inactive lever which is used as a door pull or matching trim		
8003 - Blank rose		
8005 - Passage latchset (60mm backset) Both levers always unlocked		
8006 - Privacy latchset (60mm backset) Push-button locks outside lever (outside emergency release). Inside lever unlocks door		

Legge 8000 Series levers

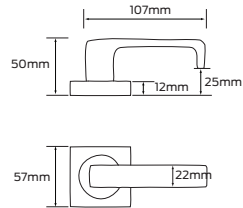
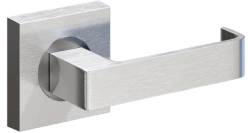
Alpha #29



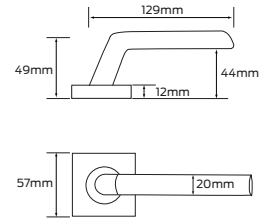
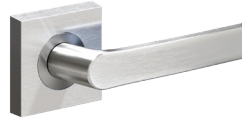
Angelo #57



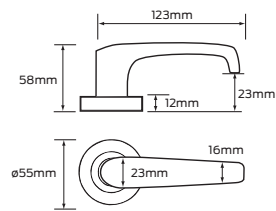
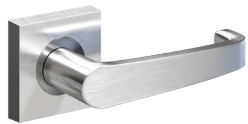
Bergen #42



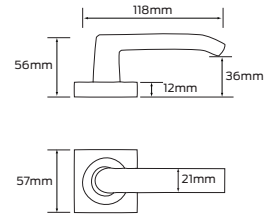
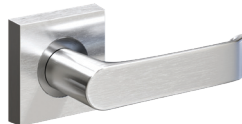
Cisa #59



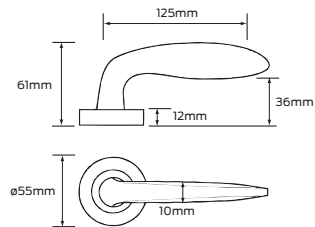
Ergo #62



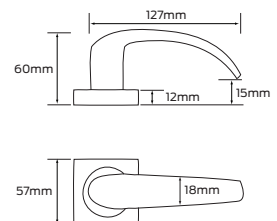
Leonardo #12



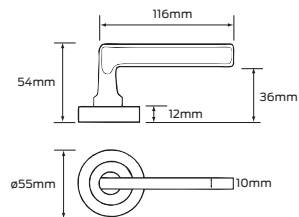
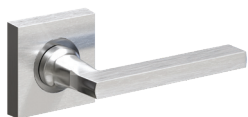
Monet #50



Neptune



Renoir #52



Rubens #56

